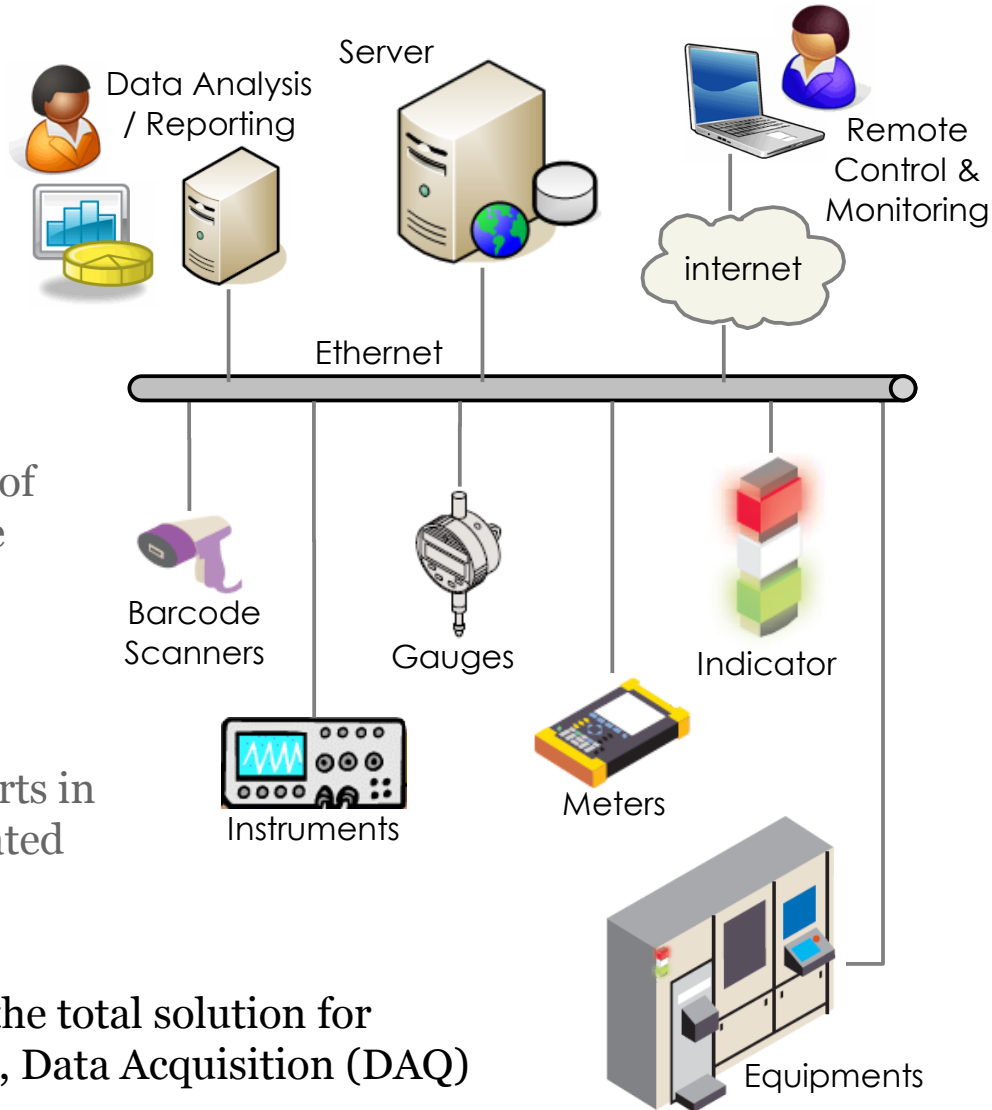


Get connected to your productivity with

# Silkron™ scada

## Supervisory Control & Data Acquisition

There are huge amount of data in the plant that are meaningful and useful for process control, quality monitoring as well as traceability.



These large amount of data should be made manageable, easily accessible and presentable in meaningful and comprehensive reports in efficient and automated manner.

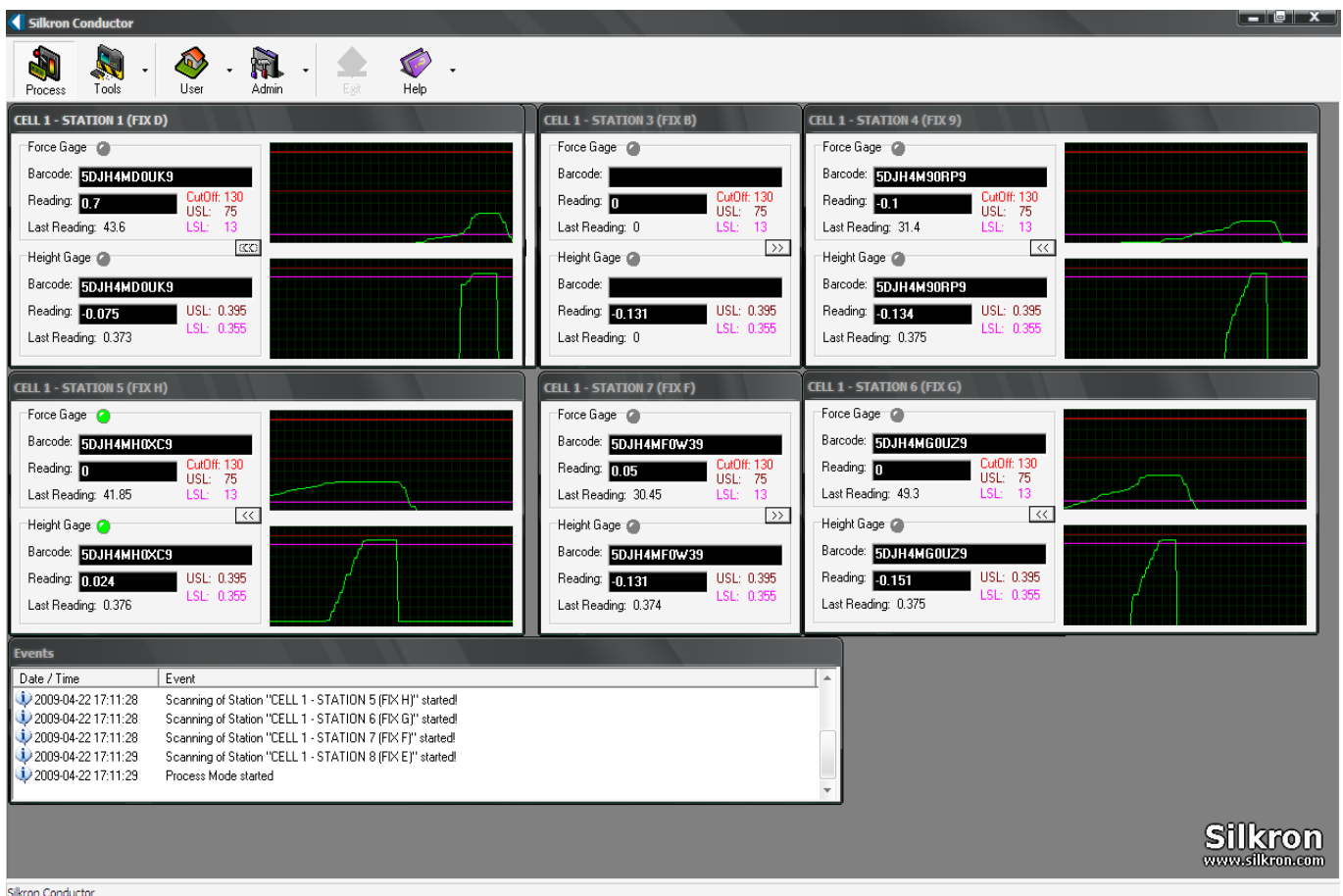
Silkron™ SCADA is the total solution for Supervisory Control, Data Acquisition (DAQ) and analysis.

Our field-proven platform manages huge data from the process, equipments, testers and measurement tools. The users can collect process and test data automatically from the plant for statistical process control (SPC) analysis and monitoring.

# HIGHLIGHTS

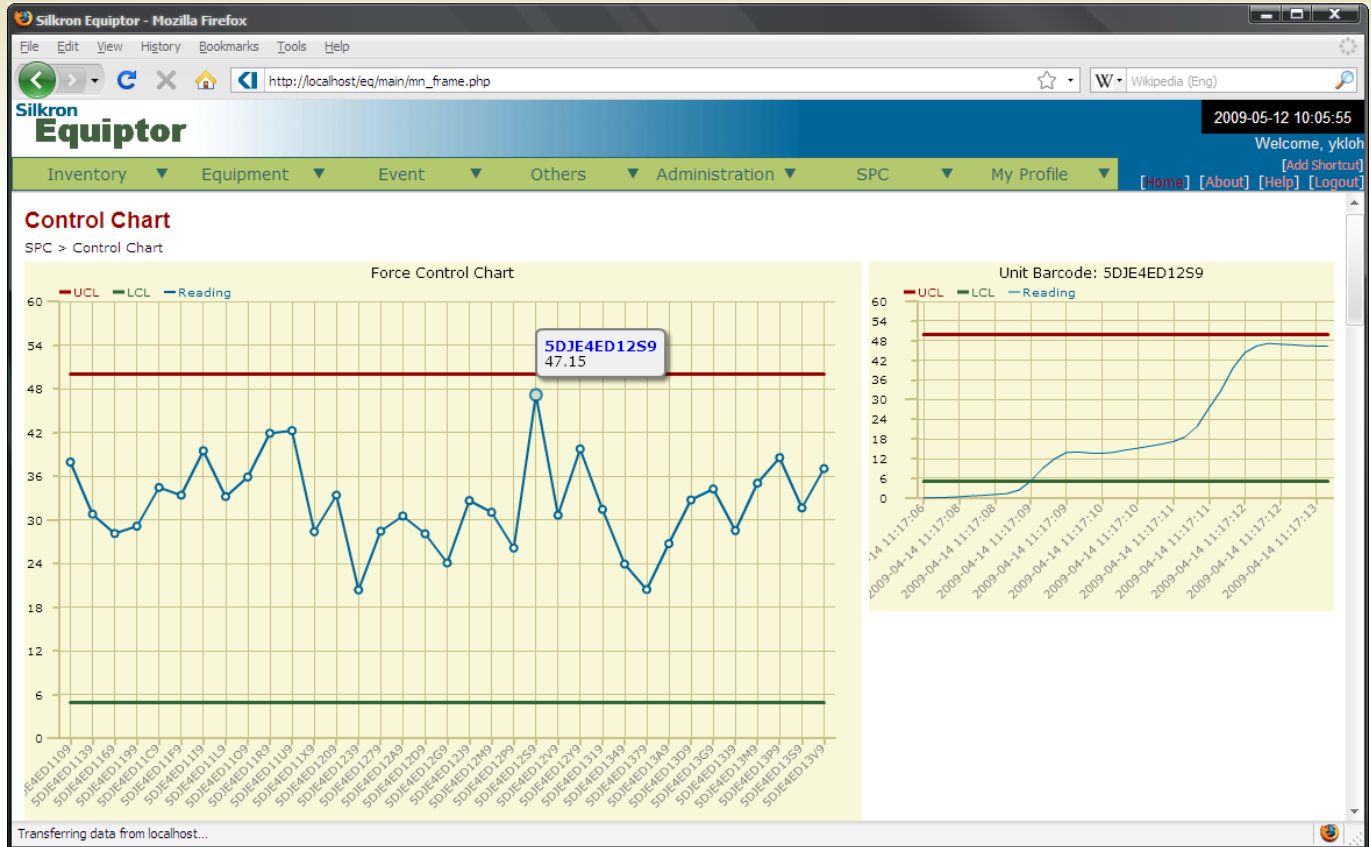
- ✓ Real-time monitoring with control limits
- ✓ Monitor and control from anywhere via web access
- ✓ Out-of-Control event triggering with alerts and machine auto-stop.
- ✓ Measurement data with barcode ID and station/machine identification for tracking purposes
- ✓ Process control to minimize human errors, escapes and quality issues
- ✓ Process data for engineering evaluation and analysis
- ✓ Graphical and tabular data analysis
- ✓ Integration to Enterprise Resources Plannings (ERP) system
- ✓ Cost-effective and fast Return-of-Investment (ROI)

## Standard Software Platform for Real-time Control and Monitoring

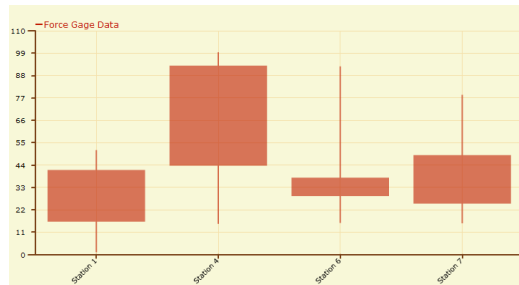


Silkron  
www.silkron.com

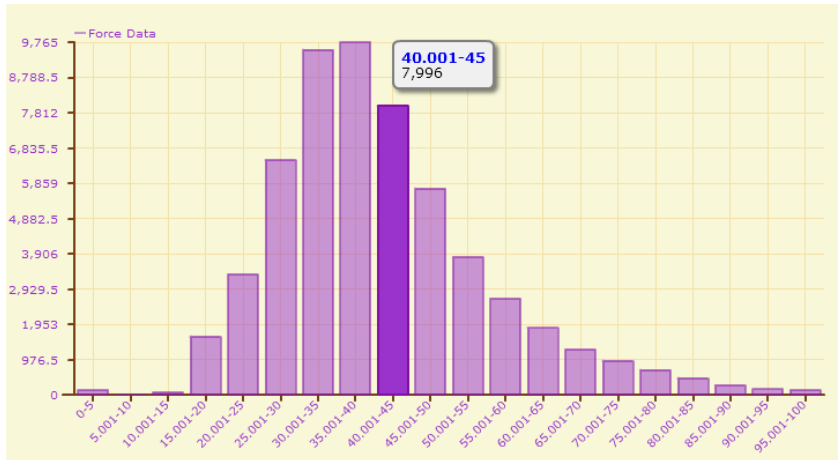
# Remote Control and Monitoring via Web Browser



## Box Plot



## Distribution Chart



## Scatter Chart

